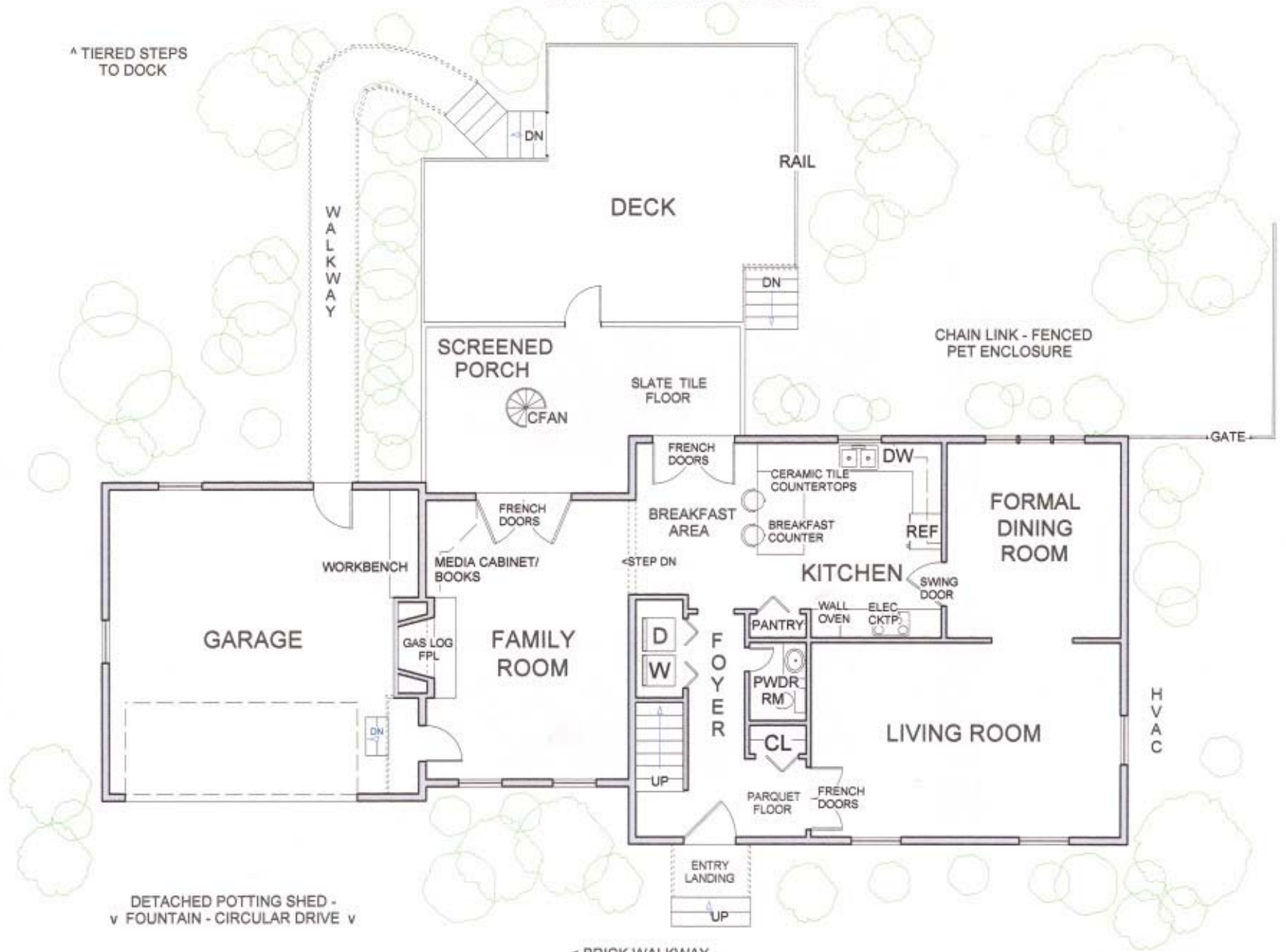


^ WATERFRONT - DOCK ^

^ TIERED STEPS TO DOCK



DETACHED POTTING SHED -
v FOUNTAIN - CIRCULAR DRIVE v

< BRICK WALKWAY

176 JAMES COVE LANDING FIRST FLOOR

DIMENSIONS ARE APPROXIMATE,
SUBJECT TO ERRORS & OMISSIONS

804-435-5312 (HM)
804-296-0878 (CL)